

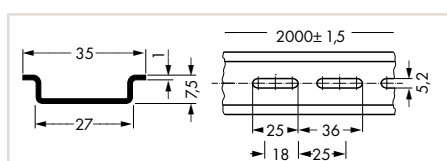
# Mounting Accessories

## Carrier Rails, Rail End Cap, Angled Support Brackets and Collective Carriers

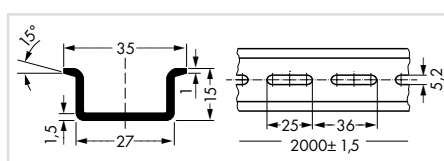
Carrier rail per EN 60715	Carrier rail similar to EN 60715	Carrier rail per EN 60715
------------------------------	-------------------------------------	------------------------------



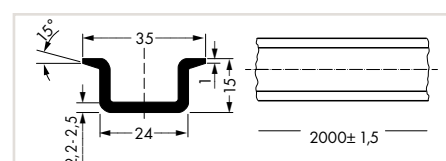
Item No.	Pack. Unit	Item No.	Pack. Unit	Item No.	Pack. Unit
Steel carrier rail, I <sub>N</sub> 76 A (based on 1 m length), 35 x 7.5 mm, 1 mm, 2 m long		Steel carrier rail, I <sub>N</sub> 125 A (based on 1 m length), 35 x 15 mm, 1.5 mm, 2 m long		Steel carrier rail, I <sub>N</sub> 125 A (based on 1 m length), 35 x 15 mm, 2.3 mm, 2 m long	
unslotted	210-113	10	unslotted	210-114	10
Hole width 25 mm; hole spacing 36 mm					
slotted	210-112	10 (10x1)	slotted	210-197	10
Hole width 18 mm; hole spacing 25 mm					
slotted	210-115	1			



Dimensions in mm



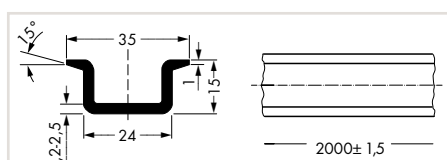
Dimensions in mm



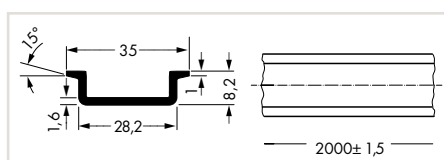
Dimensions in mm



Item No.	Pack. Unit	Item No.	Pack. Unit	Item No.	Pack. Unit
Copper carrier rail, I <sub>N</sub> 309 A (based on 1 m length), 35 x 15 mm, 2.3 mm, 2 m long		Aluminum carrier rail, I <sub>N</sub> 76 A (based on 1 m length), 35 x 8.2 mm, 1.6 mm, 2 m long		Rail end cap, for DIN-35 rail (7.5 mm high)	
unslotted	210-198	10	unslotted	210-196	10
				gray	209-109
					50 (2x25)



Dimensions in mm



Dimensions in mm



Dimensions in mm